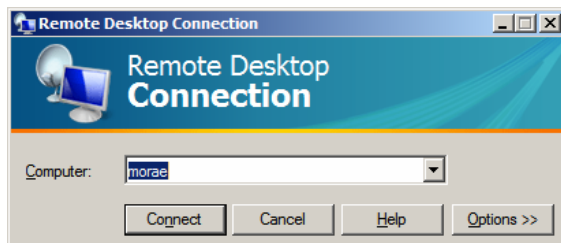


Lab 2 – Using Morae

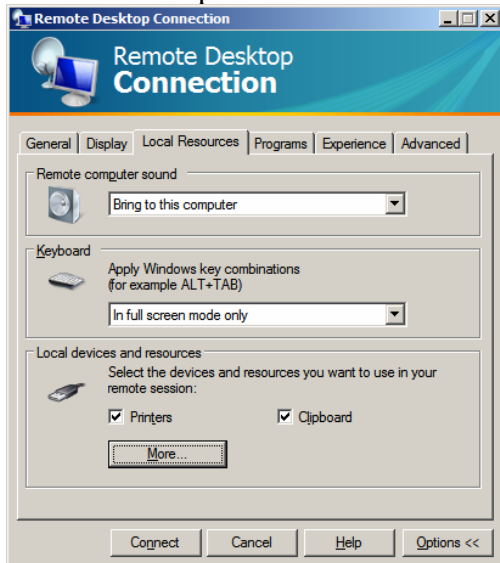
1. Go to the Morae web site and look at the videos, how to do a usability test guide (<http://www.techsmith.com/morae.asp>)
2. Working in groups of ~3 set up and run a ‘usability test’
3. First set up the Morae recorder – particularly look at the settings for the different captures video, screen etc – having these too high will affect the performance of the machine – if you have a web cam see if you can get it working – let me know.
4. Set up remote viewer(s) of this session.
5. Run a little record/view and add some tags to the session – check out how these get synched between the machine (I am not sure myself how this works now as it appears to have changed from earlier versions).
6. Save a session.
7. Login to the Morae Server – see below
8. Try out the Morae Viewer and Morae manager
9. See what you can do with the Manager – including searching for flags, making videos
10. Lastly check on your files – how big are they? how many minutes did you record? are being saved! Log out and log back in again and check that everything is still where you think it should be.

How to connect to the Morae Server for Morae Manager

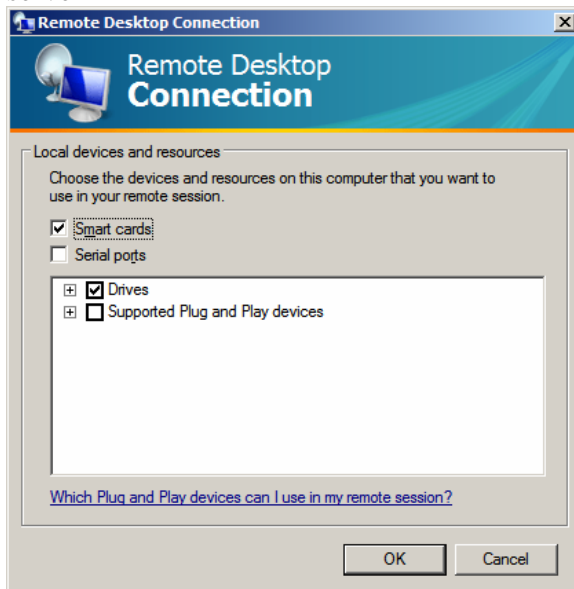
- 1 In the remote desktop connection enter morae



- 2 And click on Options – under local resources



- 3 Click 'more' and tick drives - your H drive will now appear as H: on the remote server



- 4 Ok, ok and then connect with ec\upi and password



- 5 You have to 'trust' the connection
- 6 You should now be able to use morae manager and see you 'normal' network drive (H:).
- 7 You can save files on the remote server – when you start a morae session the c:.... is actually on the remote server. You have a **little** bit of space here – if everyone fills their available space the server will run out of space!